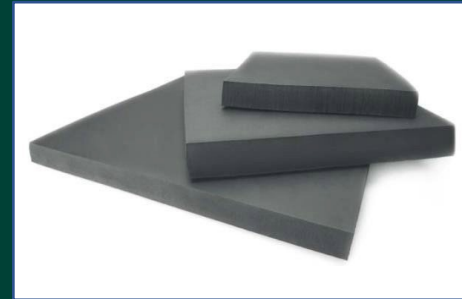


# COMPANY PRESENTATION

(updated: July 2022)

- TECHNICAL **M**OULDED RUBBER **P**RODUCTS;
- EXPANDED RUBBER **M**ATS;
- LABORATORY **T**ESTS



## Design & Manufacturing



**SOGO**  
RUBBER TECHNICAL PRODUCTS



**SOGOLAB**  
FREE TO SHAPE

— SINCE 1967 —



**SOGO SpA Group** is an Italian consolidated industrial reality,  
Focused on the design, production and distribution of:



- **technical RUBBER components;**
- **EXPANDED RUBBER mats**

Mainly for the **automotive, industrial**  
and **railway** applications



- **development & production of RUBBER COMPOUNDS**
- **LABORATORY TESTS** on finished products

**AUTOMOTIVE**



**RAILWAY**

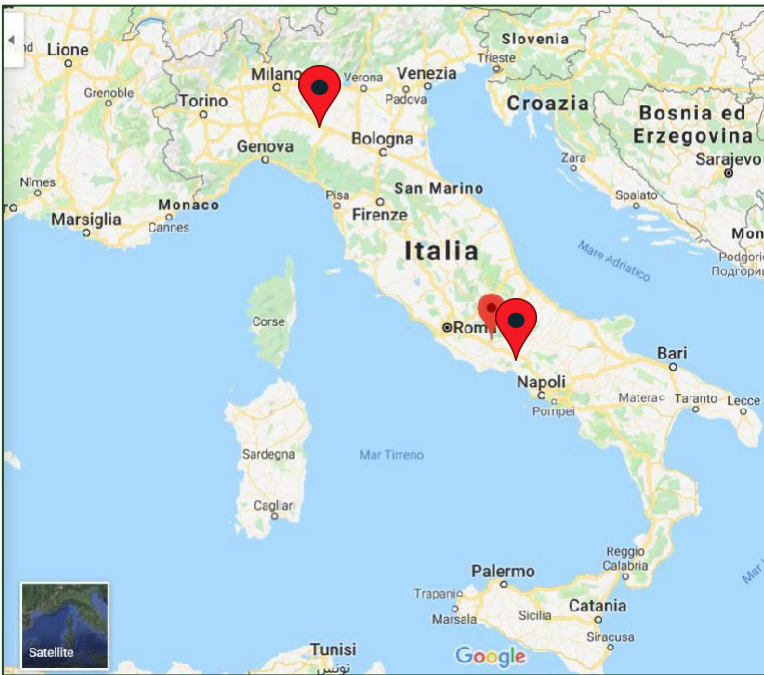


**INDUSTRY**



**COMPOUNDS**





## ITALY - Frosinone



**SOGO SpA** – with its HeadQuarter and its **Production Facility in Italy (Frosinone)** and a **warehouse in Milano area** - is expanding its presence **Worldwide** in order to further and better support the Customers' needs:

-  **Italy (HQ & Plant);**
-  **France;**
-  **Germany;**
-  **Bulgaria;**
-  **Marocco**



The Production Plant has achieved all the **Certifications required** in order to supply **Automotive, Railway and Industry** applications

# SOGO – Certificates



**ISO 9001**



**IATF**



**ISO 14001**

# SOGO – Highlights



Founded in **1967** in Frosinone Italy, **SOGO SpA** Italian production plant covers more than **25.000 square/meters** with a production capacity over **9.000 tons/year** and more than **1.500 compounds formulations**.

— SINCE 1967 —

[www.sogo.it](http://www.sogo.it)

**SOGO**  
S.p.A

1967

**SOGO** S.P.A.  
INDUSTRIA ARTICOLI TECNICI IN GOMMA

1998

**SOGO**<sup>®</sup> s.p.a.  
ARTICOLI TECNICI IN GOMMA

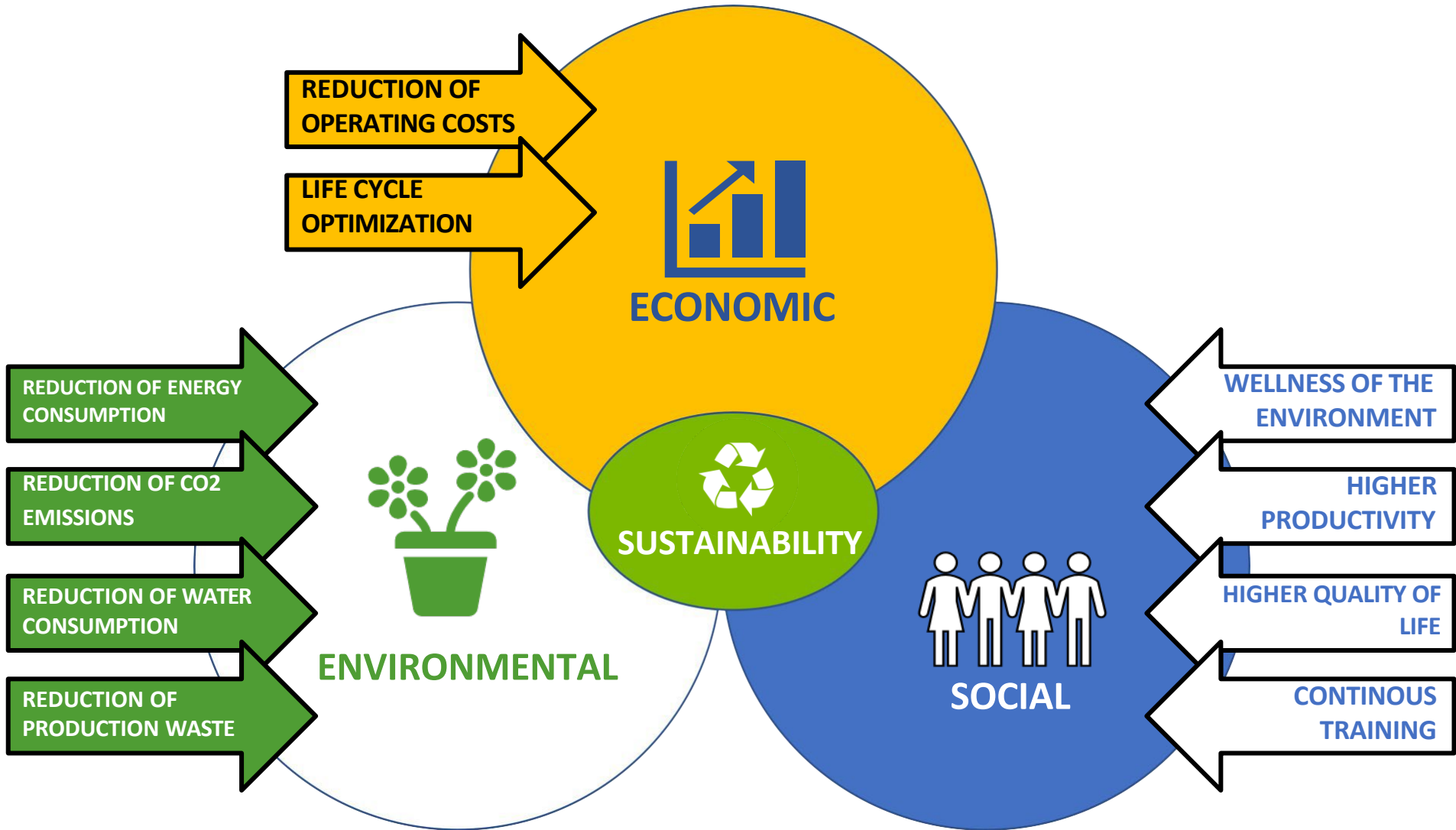
2006

 **SOGO**  
RUBBER TECHNICAL PRODUCTS

 **SOGOLAB**  
FREE TO SHAPE

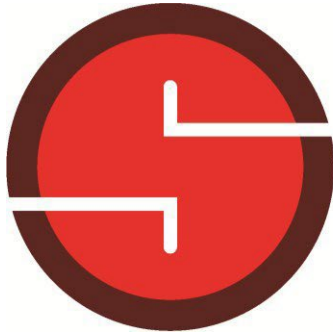
2017

# SOGO – Sustainability and Environment



# SOGO – Renovation Plant (finished in September 2019)





# SOGO LAB

FREE TO SHAPE

In **2016** «**SOGO-LAB**» was born, thanks to important investments in lab-instruments, technologies and highly specialized personnel; with the aim of supporting customers in the **design, co-design** and in the **testing** phases

CONCE  
PT  
DESIG  
N

CO-DESIGN

ENGINEERING

LAB  
SIMULATIO  
NS

PROTOTYPING

TESTING

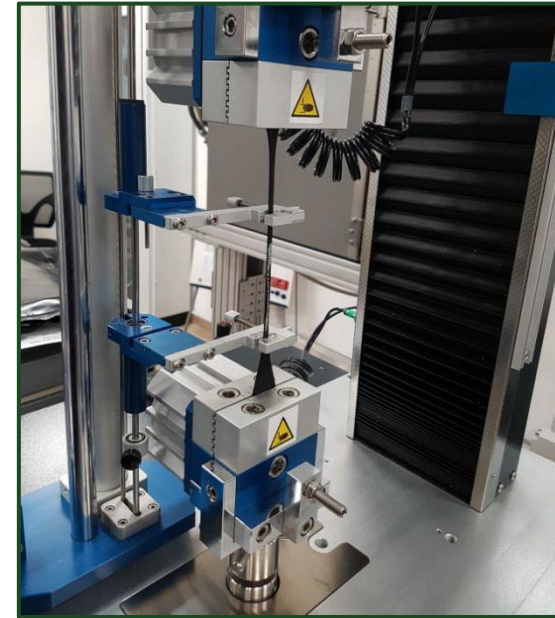




## NEW LAB TOOLS

Dynamometer, **ShoreA Durometer**, Rheometer, **Thickness Gauges**, Calipers, **Micrometers**, Profile Projector, **Compression Set**, Impact Tester, **Flammability Tester**, Ozone Tester, **Ovens**, Theraometer, **Mooney**, Laboratory Samples Press, **IRHD**, Densimeter, **Abrader**, 3D Measuring System, **Climatic Chamber**, MTS with climatic chamber, **Design Tools**

# SOGO-Lab – New Laboratory

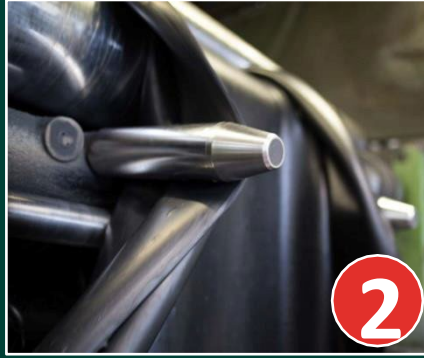


# What do we do?

## CO-DESIGN



## COMPOUND



## RAPID AND STANDARD PROTOTYPE



## MOULDED RUBBER



## CO-MOULDING



## EXPANDED EPDM & NEOPRENE



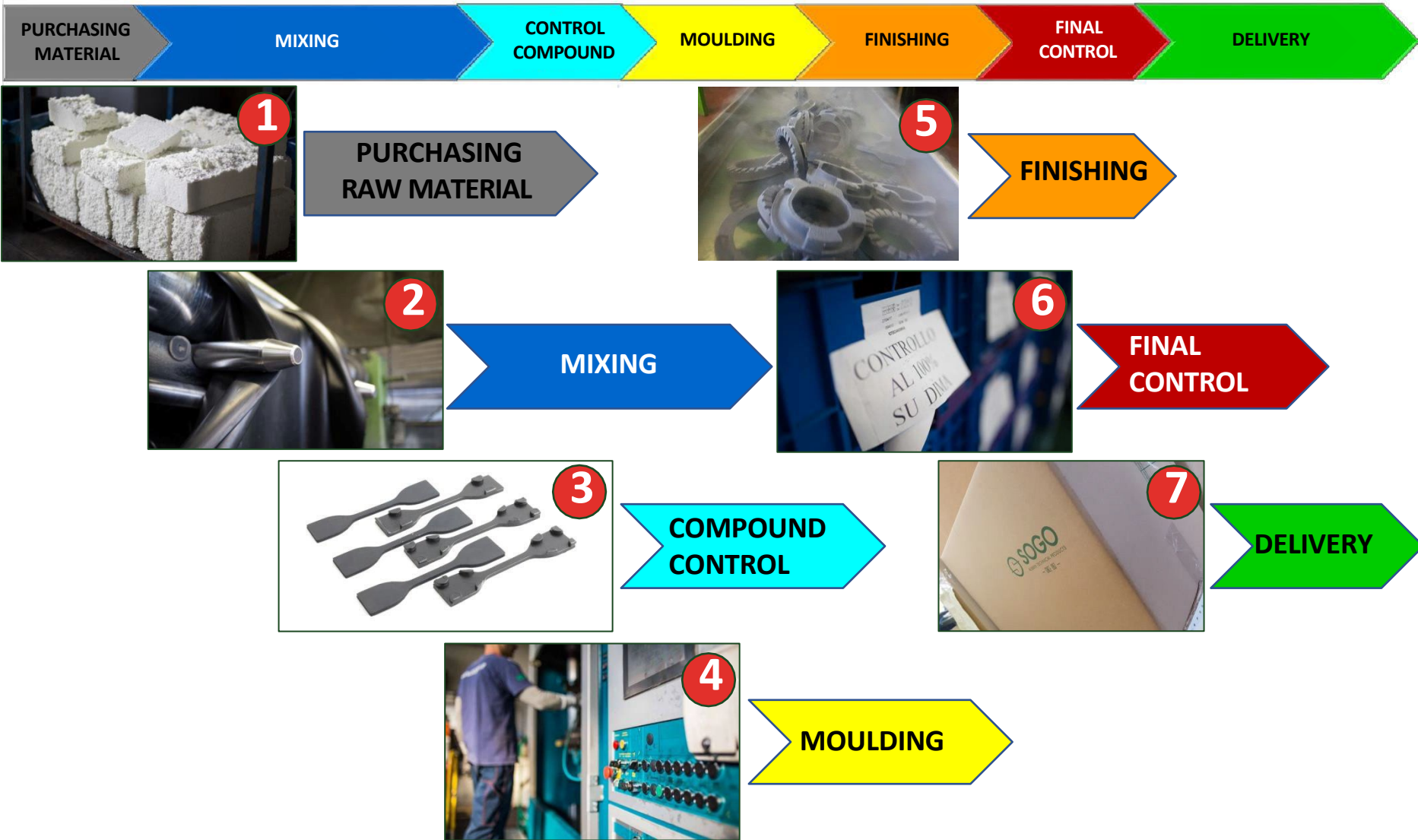
## ASSEMBLYING



## LAB TESTS



# How do we do? Flow process diagram

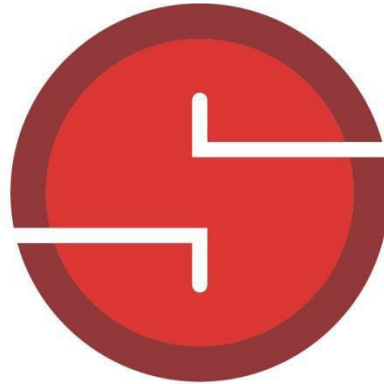


# Main Automotive Customers – Direct OEM

FIAT PROFESSIONAL DODGE VAUXHALL GM  
DS AUTOMOBILES CHRYSLER  
ALFA ROMEO FIAT PEUGEOT SMART  
**STELLANTIS** JEEP **DAIMLER**  
CITROEN OPEL LANCIA RAM MERCEDES  
MASERATI ABARTH HONDA **DEUTZ**  
**MOTO GUZZI** **FERRARI**  
CNH IVECO SEAT LAMBORGHINI  
**PIAGGIO** **VOLKSWAGEN**  
AUDI SEAT BENTLEY

# Main Railway Customers





# SOGOLAB

FREE TO SHAPE

— SINCE 1967 —

## RHEOLOGICAL TESTS

- Mooney viscosity
- **Rheology testing (MDR)**

## MATERIALS CHARACTERIZATION

- FT-IR Spectrometer
- **Thermogravimetric analysis (TGA)**
- Differential Scanning Calorimetry



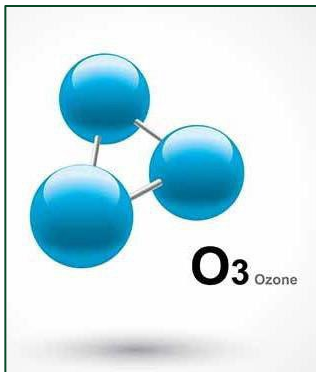
## PHYSICAL-MECHANICAL TESTS

- Determination of ShA Hardness
- **Determination of IRHD and mIRHD Hardness**
- Determination of Electrical Resistance
- **Traction and compression dynamometric test**
- Determination Compression Static Hysteresis
- **Tear test**
- Compression Set Under Load
- **Compression Set under Deformation**
- Determination of Density
- **Determination of humidity**



## ACCELERATED AGING TESTS

- Determination of Ozone Resistance
- **Aging tests in air oven up to 200°**
- Aging tests in fluids up to 200°
- **Water absorption tests**



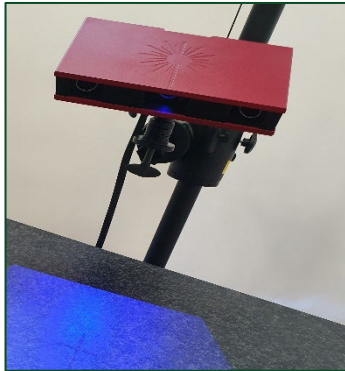
## CHECKS ON ELASTIC CHARACTERISTICS

- Determination of Static Stiffness on Finished Component
- **Determination of Dynamic Stiffness on Finished Component (0÷200 Hz)**
- Determination of Fatigue Strength on Finished Component at:
  - T.A.
  - +250°c in Climatic Room
  - -40°c in Climatic Room



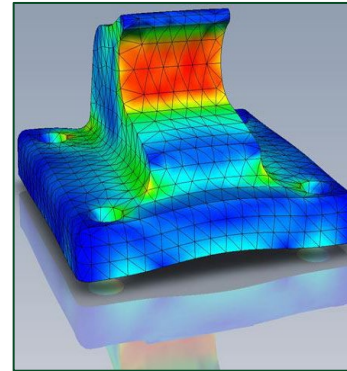
## DIMENSIONAL CHECKS

- Dimensional checks with Optical Meter  
3D Core Essential GOM



## FURTHER SERVICES

- Finite Element Analysis
- **Prediction Life**
- Flow Analysis (Mold Flow Simulations)
- **New Compounds research and Industrialization**
- Specimen molding
- **Processing of samples on Finished Component with Splitting Machine**





RUBBER

EXPANDED RUBBER

CO-MOULDED



## MOULDED RUBBER



## EXPANDED MATERIAL

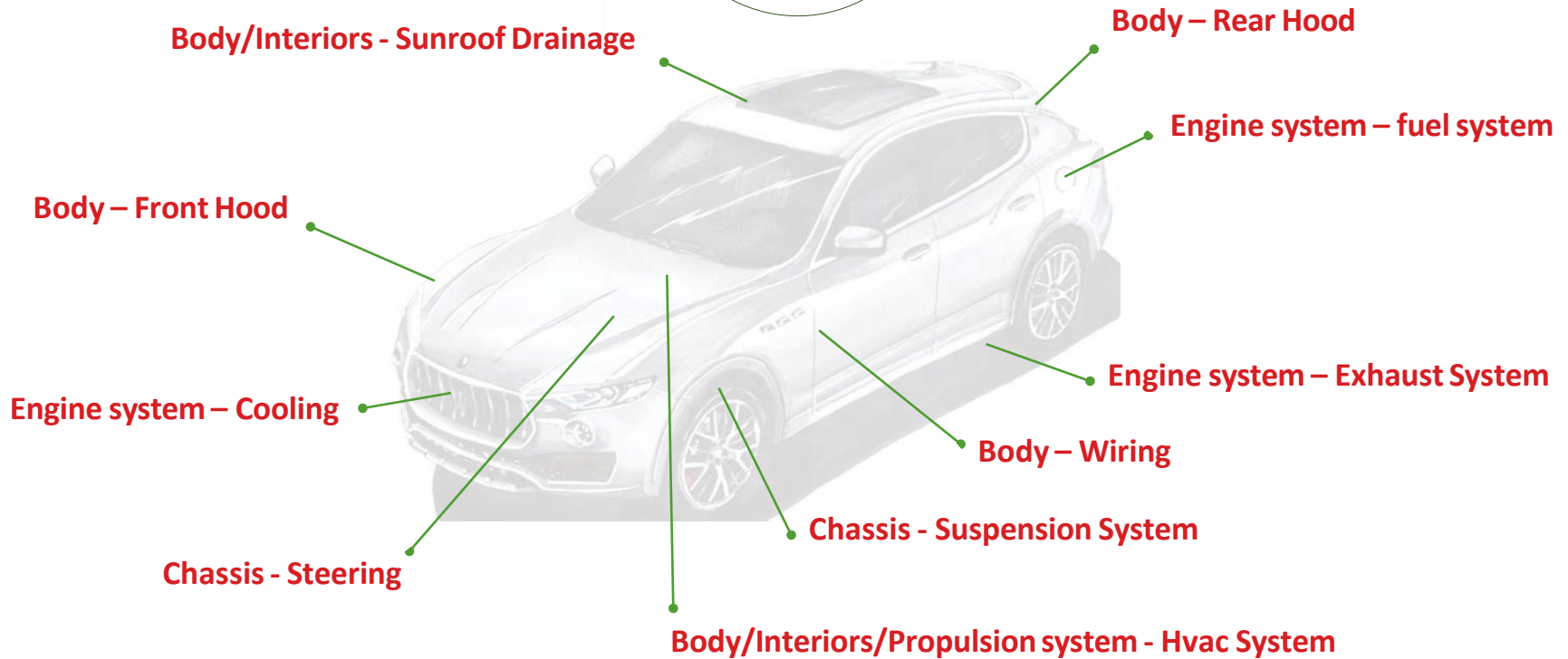
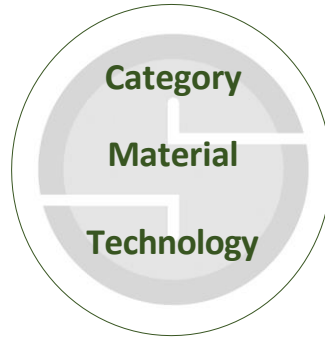


## CO-MOULDED



## PROTOTYPES





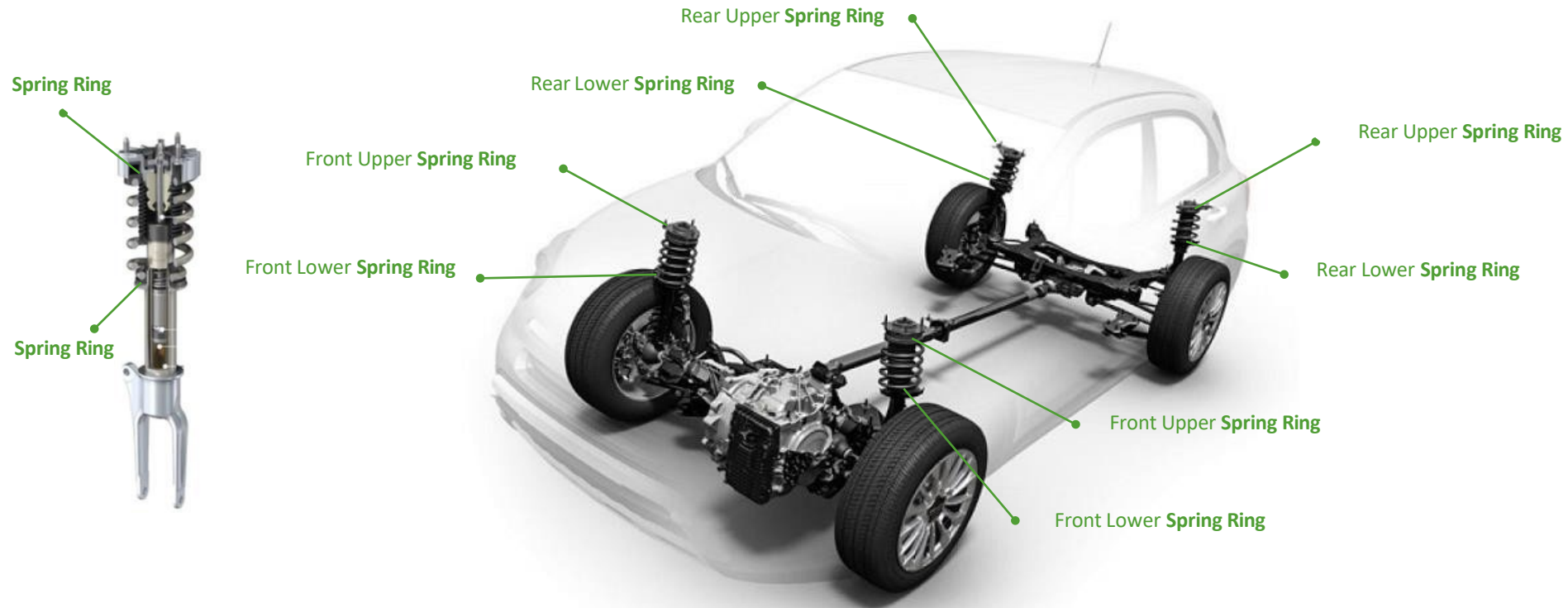
# CHASSIS – Vibration Dampings for Suspension System



- **Category: Rubber**
- Material: NR/SBR 50÷80 ShA
- Technology: Injection Molding



- **Category: rubber bonded to plastic insert**
- Material: NR/SBR 80 ShA + PA66 GF35
- Technology: Injection Molding



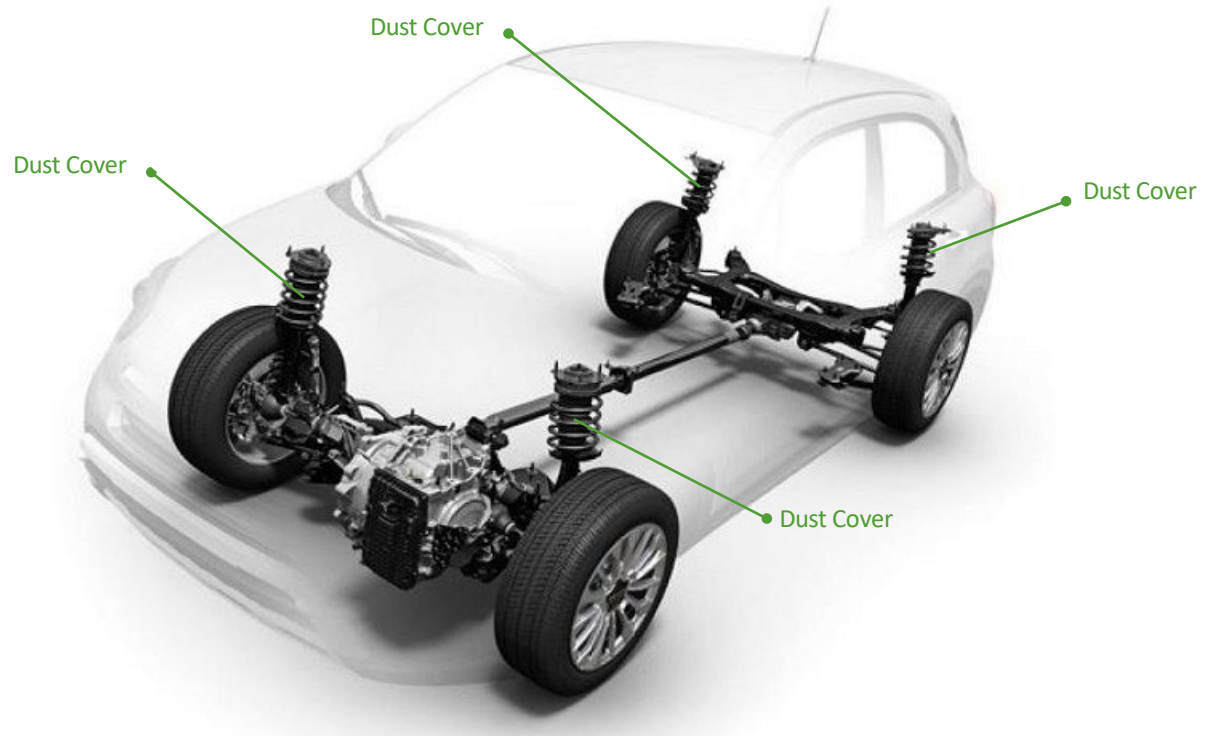
# CHASSIS - Suspension System Bellows Dust Cover



- **Category:** Rubber
- **Material:** EPDM 60÷70 ShA
- **Technology:** Injection Molding



Dust Cover



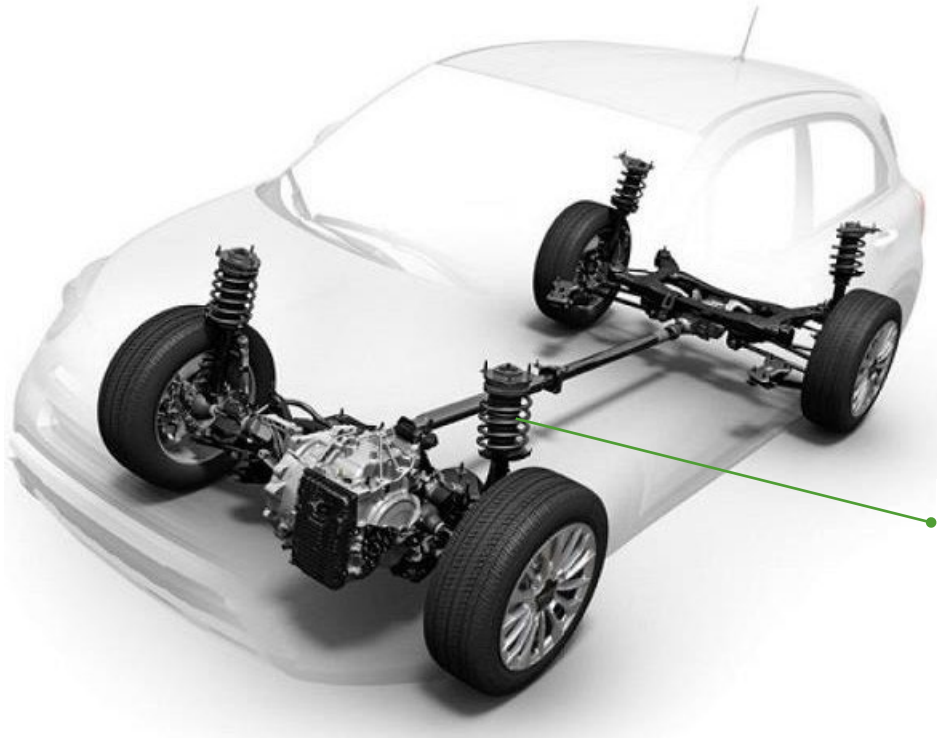
Dust Cover

Dust Cover

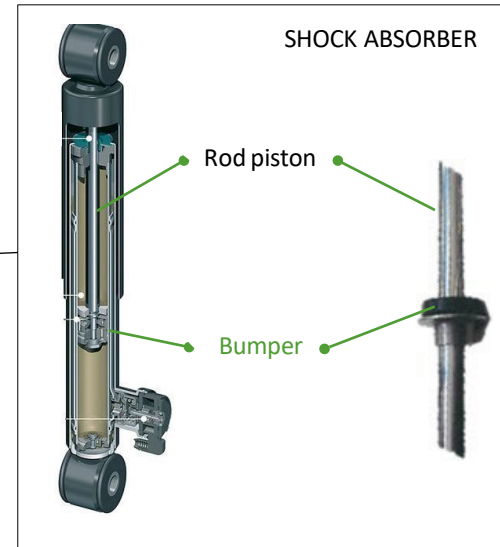
Dust Cover

Dust Cover

# CHASSIS – Bumper for Suspension System (rebound stop)



- **Category: Rubber**
- Material: HNBR 80 ShA
- Technology: Injection Molding

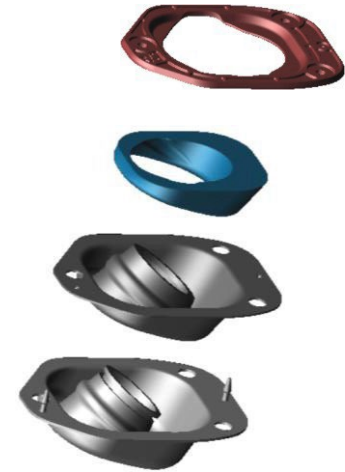
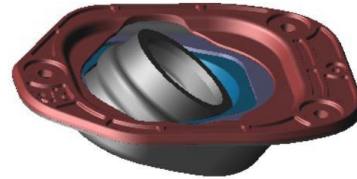




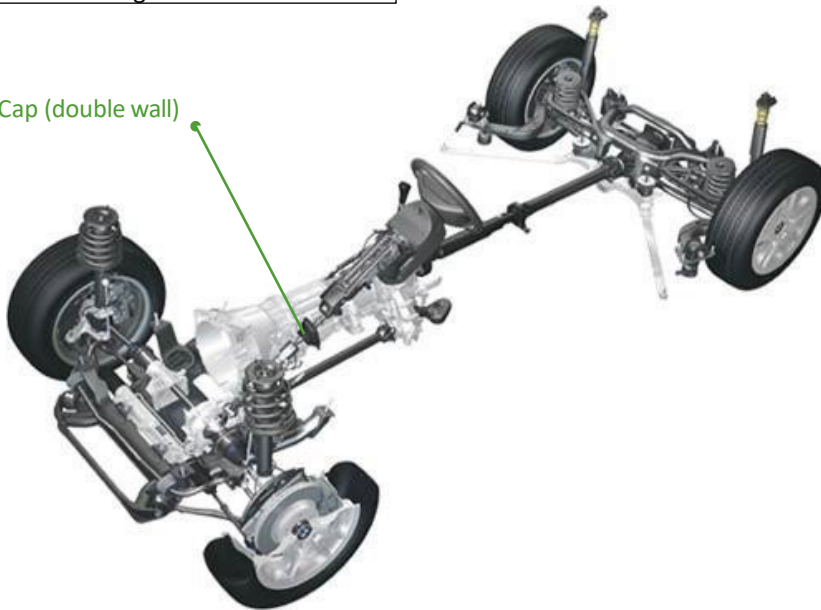
# CHASSIS – Insulator Cap Steering Column (anti noise gasket)



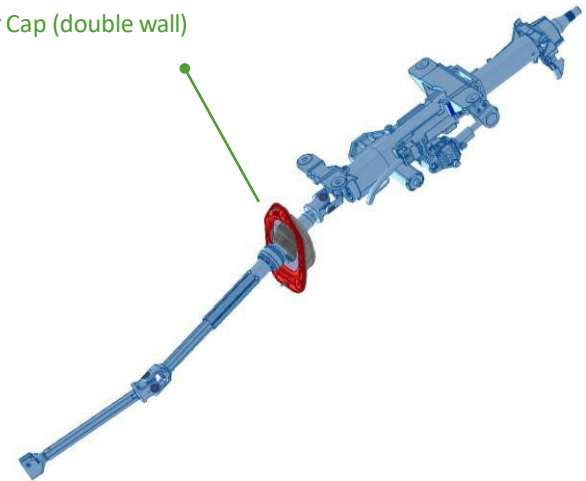
- **Category:** rubber assembled to plastic insert
- **Material:** EPDM 45 Sha + PP + PULER (if required)
- **Technology:** Injection Molding



Insulator Cap (double wall)



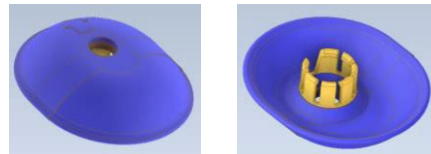
Insulator Cap (double wall)



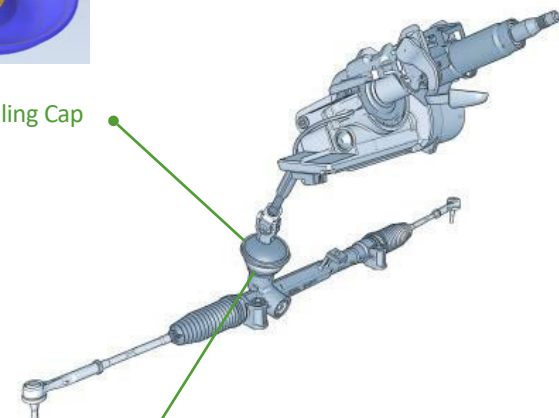
# CHASSIS – Sealing Cap Steering Column



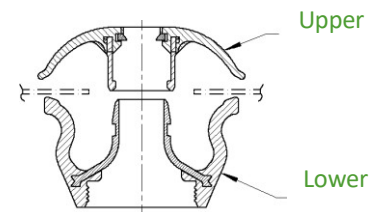
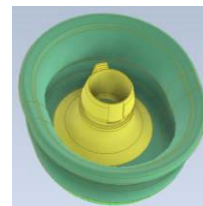
- **Category: rubber bonded to plastic insert**
- Material: EPDM 40 ShA + PA6 G15
- Technology: Injection Molding



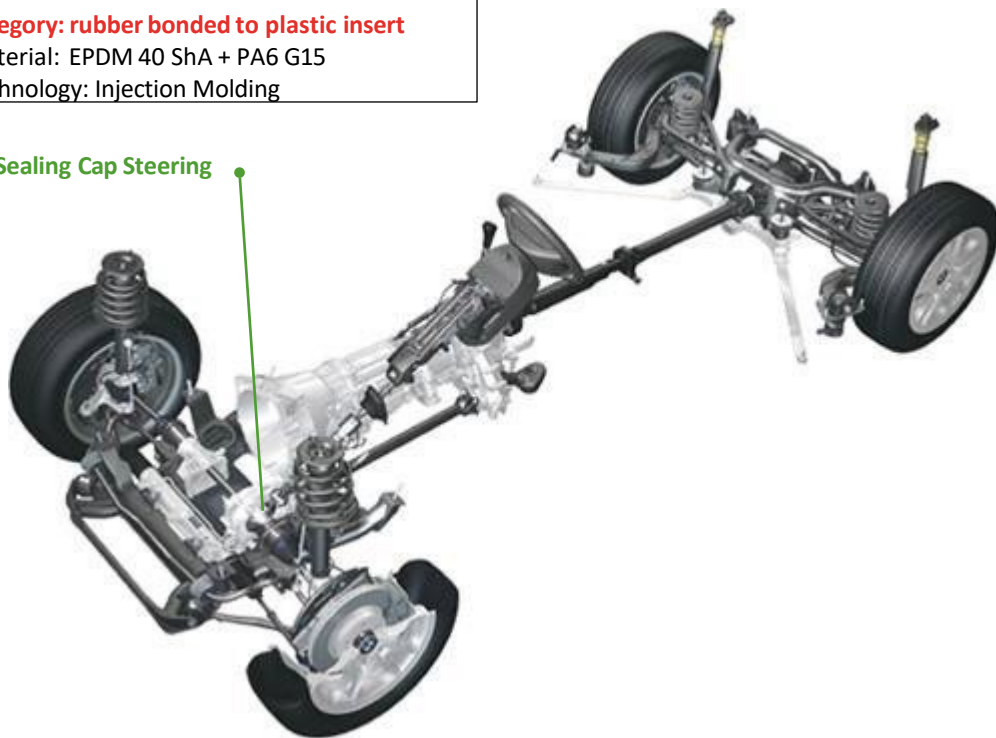
Upper Sealing Cap



Lower Sealing Cap



Sealing Cap Steering



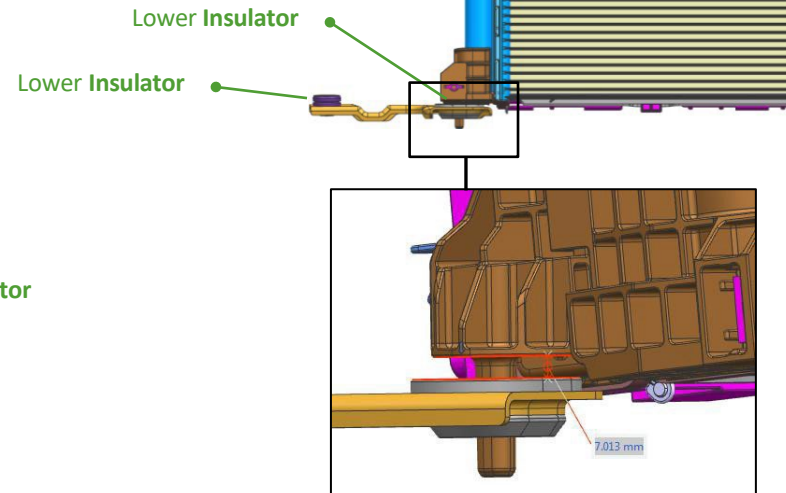
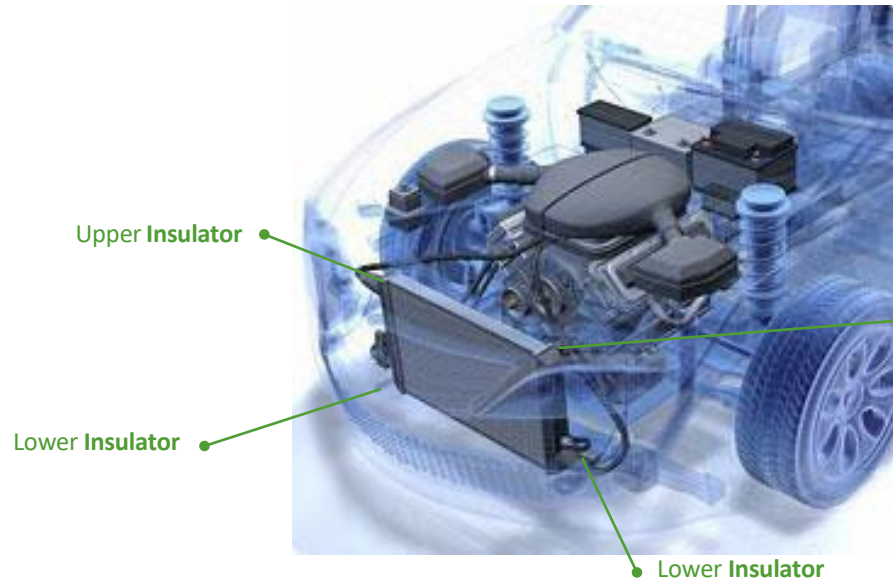
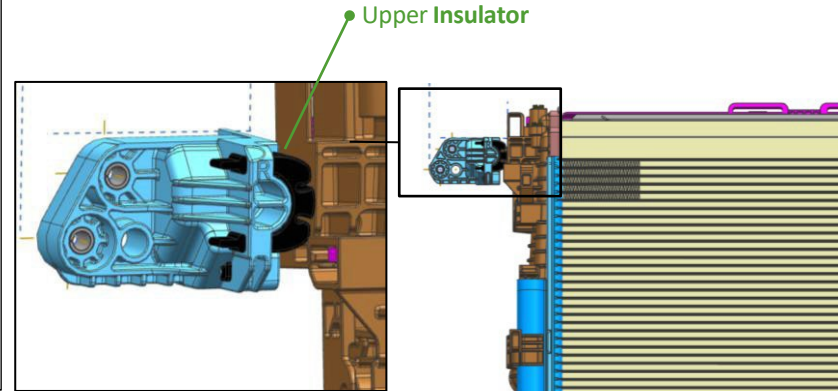
# ENGINE SYSTEM – Cooling System Insulator (radiator support)



- **Category: Rubber**
- Material: EPDM 37÷60 ShA
- Technology: Injection Molding



- **Category: : Rubber bonded to plastic insert**
- Material: EPDM perox 57 ShA + PA 66 GF30
- Technology: Injection Molding

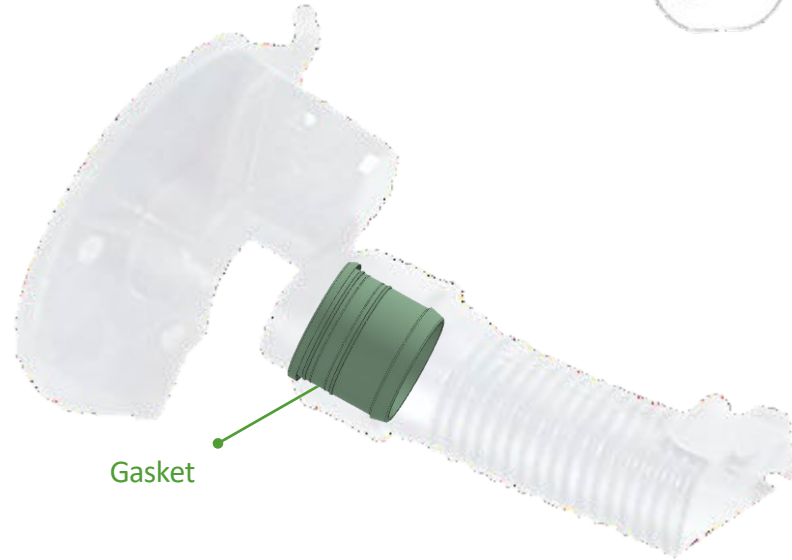
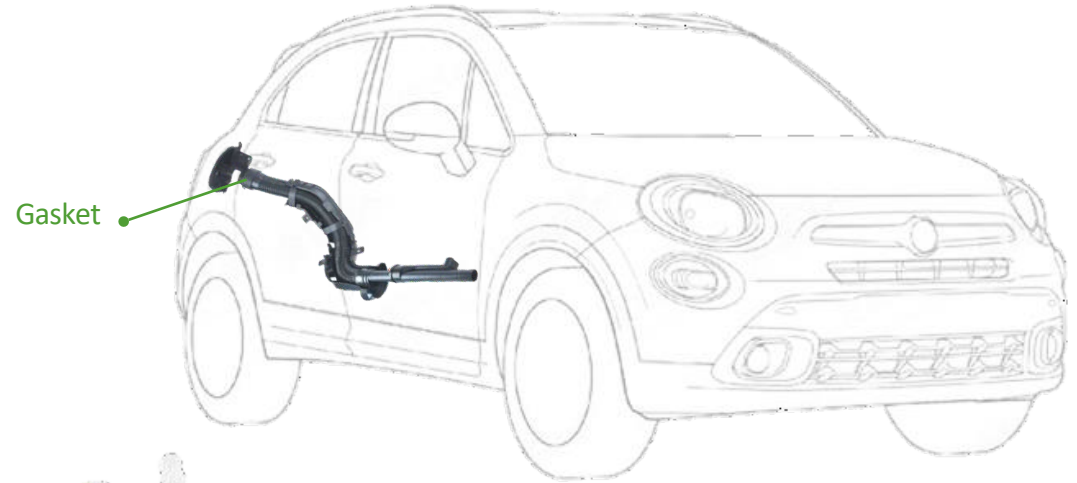


# ENGINE SYSTEM – Fuel Injection System Gaskets



- **Category: Rubber**

- Material: FKM 50÷60 ShA
- Material: NBR 50÷60 ShA
- Material: HNBR 60 ShA
- Technology: Injection Molding



# ENGINE SYSTEM – Exhaust System Muffler Supports



- **Category: Rubber**
- Material: NR 50±60ShA
- Material: EPDM 50±60ShA
- Material: VMQ 60 ShA
- Technology: Injection Molding



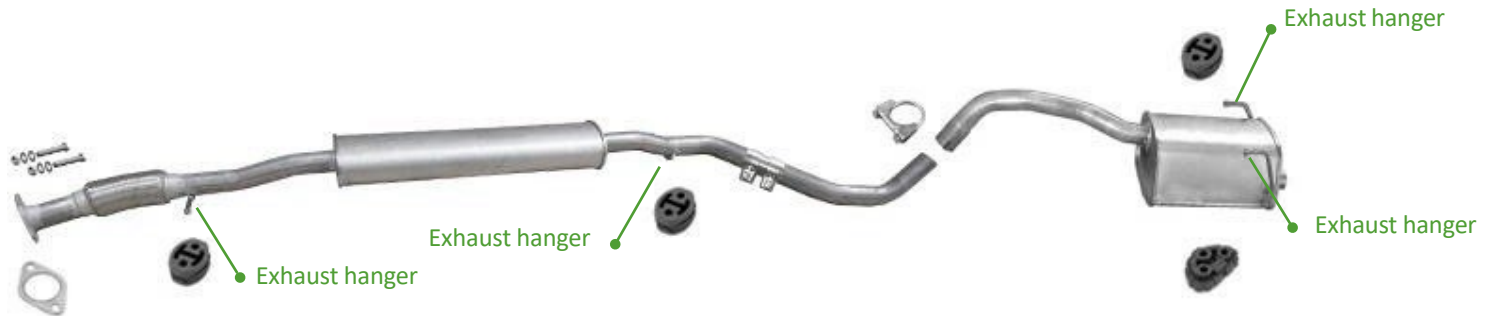
- **Category: Rubber assembled to poliester**
- Material: NR 50±60ShA
- Material: EPDM 50±60ShA
- Material: VMQ 60 ShA
- Technology: Injection Molding



- **Category: Rubber bonded to polyester**
- Material: NR 50±60ShA
- Material: VMQ 60 ShA
- Technology: Injection Molding



- **Category: Rubber bonded to metal insert**
- Material: NR 50±60 ShA
- Technology: Injection Molding



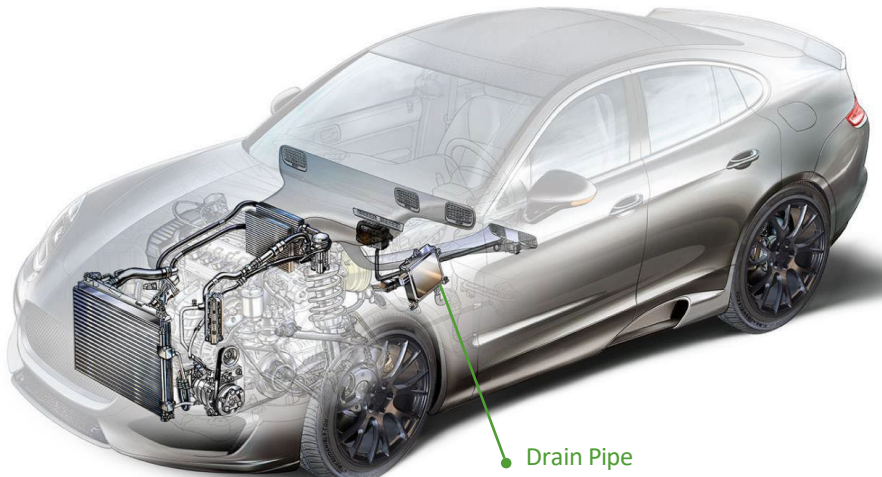


- **Category: Rubber**
- Material: EPDM 60 ShA
- Technology: Injection Molding

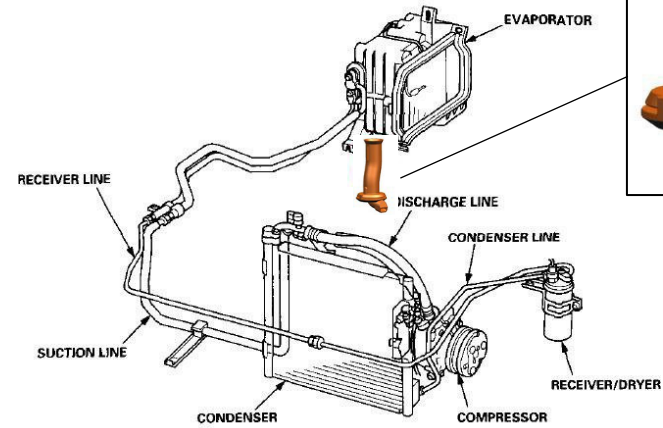
HVAC System

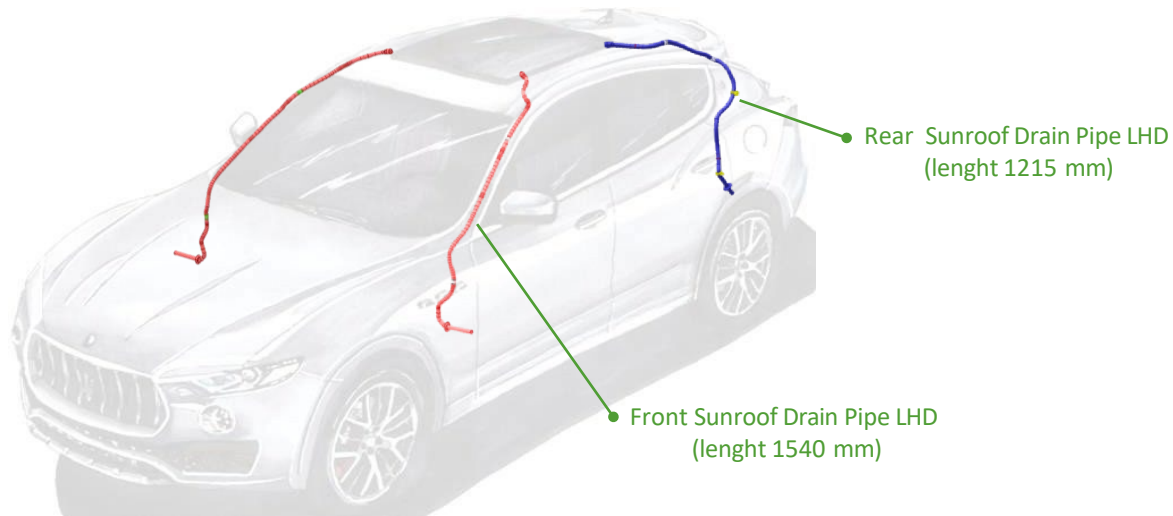


- **Category: Rubber assembled to plastic insert**
- Material: ACM 60 ShA
- Technology: Injection Molding

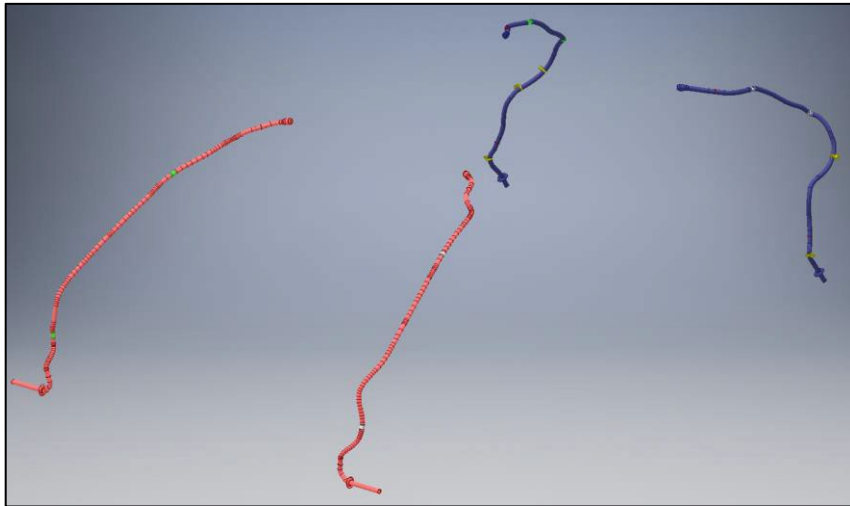


Drain Pipe

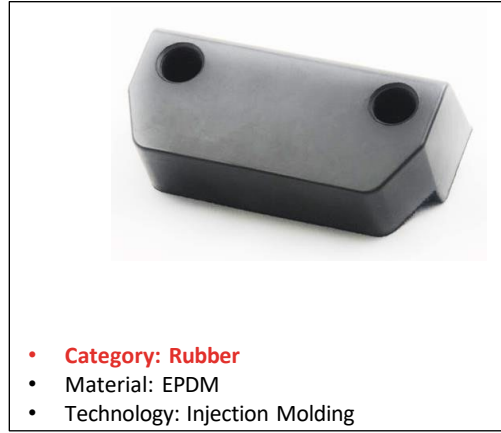
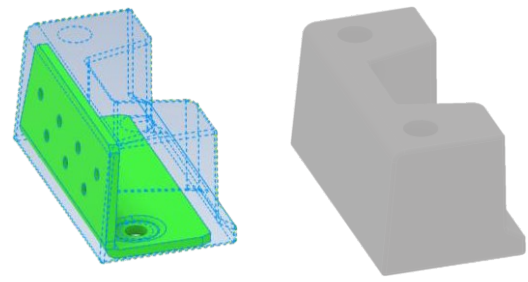




- **Category: Rubber assembled to plastic insert**
- Material: EPDM 50+60ShA
- Technology: Injection Molding



# BODY – Door Bumper Stop



Stellantis Project: X250 (Ducato)

Door Bumper

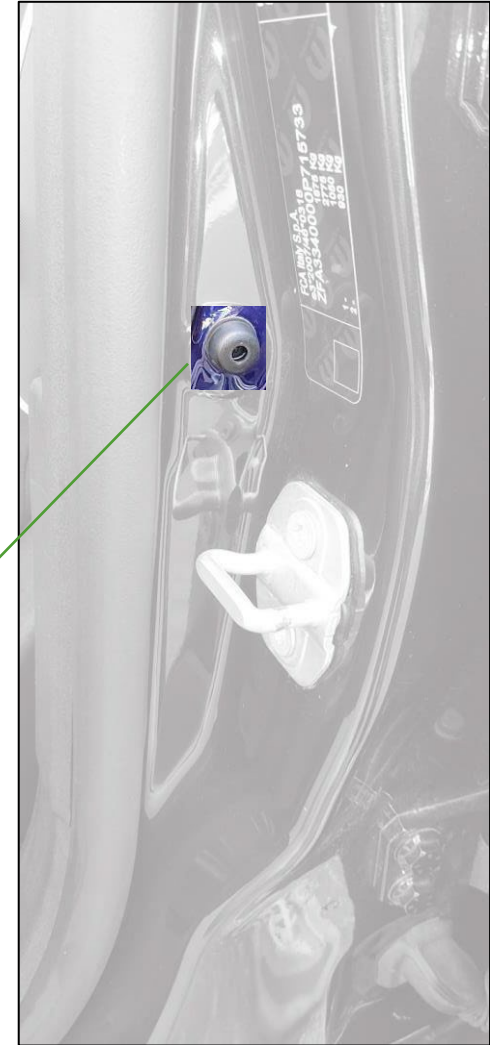




# BODY – Door Bumper with/without Adhesive Layer



Door Bumper



# BODY – Front/Rear Hood – Fix Hood Stop



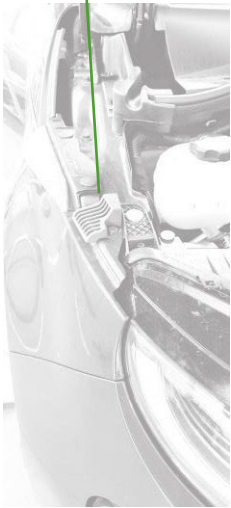
- **Category:** Rubber bonded to Acrylic Foam Tape
- **Material:** EPDM 60 ShA
- **Technology:** Injection Molding



- **Category:** Rubber
- **Material:** EPDM 60÷80ShA
- **Technology:** Injection Molding

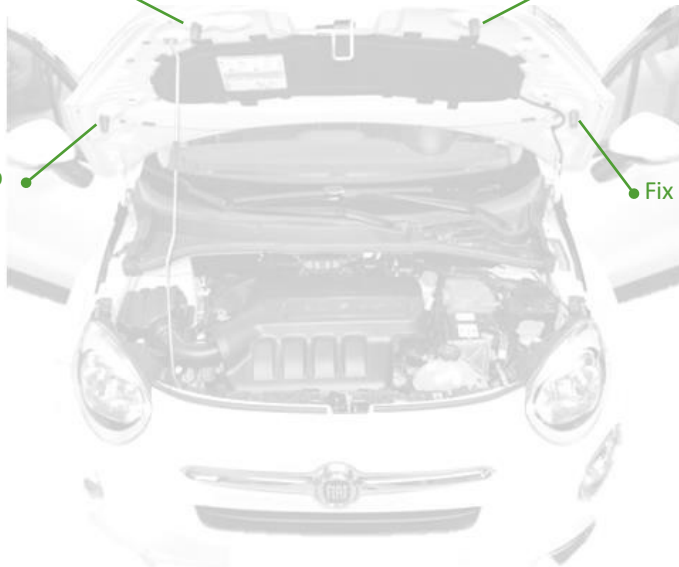


Fix Hood Stop



Fix Hood Stop

Fix Hood Stop



Fix Hood Stop

Fix Hood Stop

Fix Hood Stop



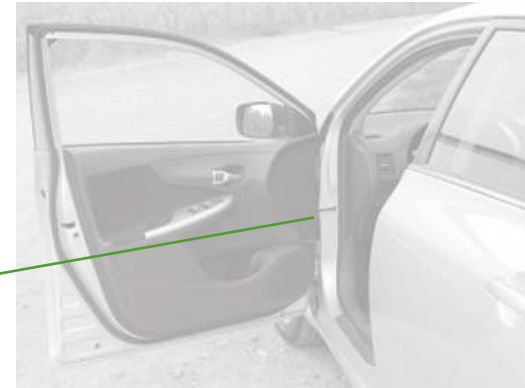
# BODY – Wiring Grommet



- **Category:** Rubber
- **Material:** EPDM 50÷60ShA
- **Technology:** Injection Molding

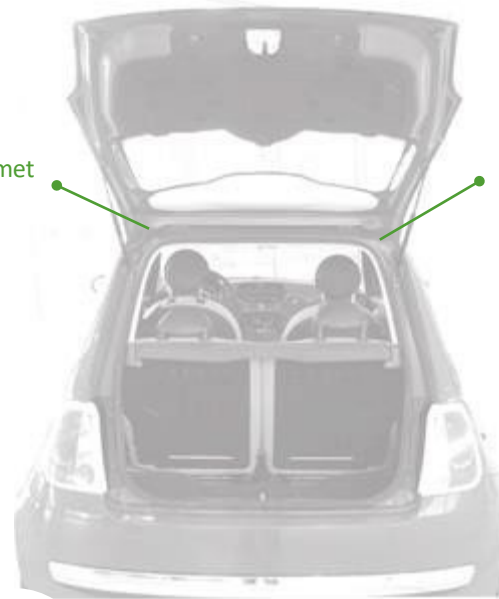


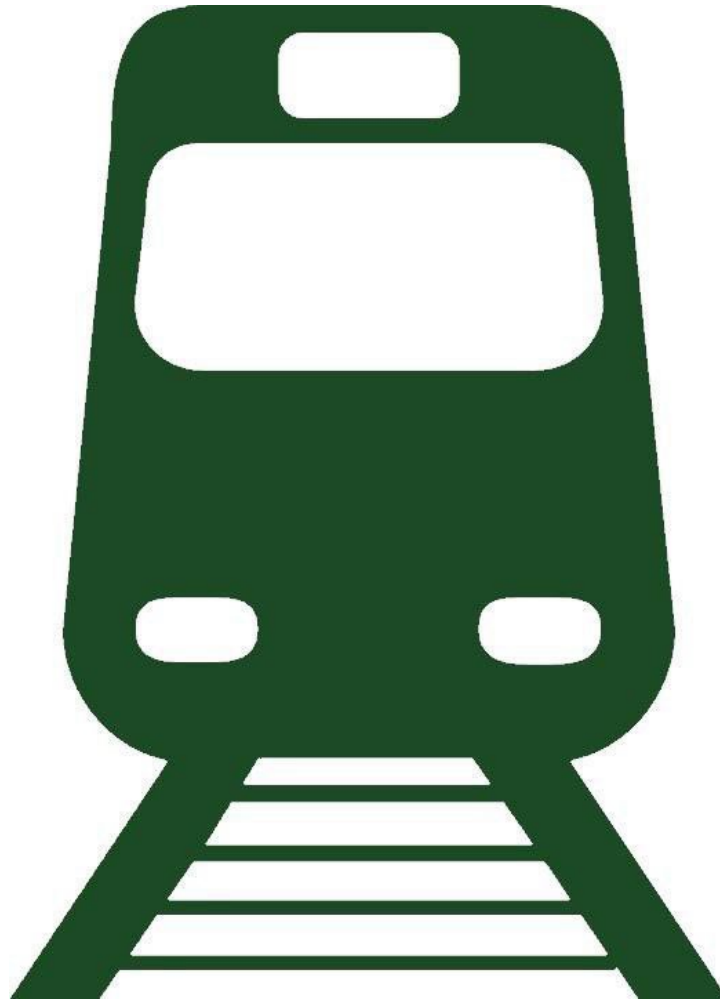
Wiring grommet



Wiring grommet

Wiring grommet





RUBBER

EXPANDED RUBBER

CO-MOULDED



## RUBBER BOOT



## UNDER SLAB ELASTIC BEARING



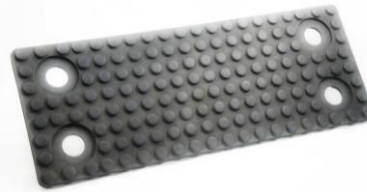
## RAIL PADS



## RAIL PADS



## RAIL PAD



## BRIDGE SUPPORTS



## BRAKE MEMBRANES



## ELASTIC PAD



## WASHERS



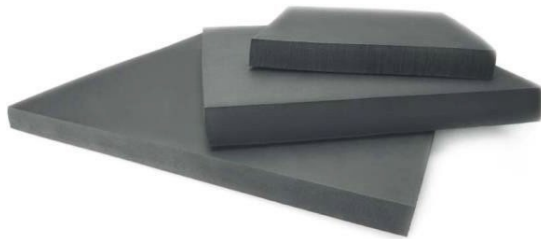
RUBBER

EXPANDED RUBBER

CO-MOULDED



## EXPANDED NEOPRENE SUB BALLAST MATS



## EXPANDED EPDM SUB BALLAST MATS



## STOPPERS



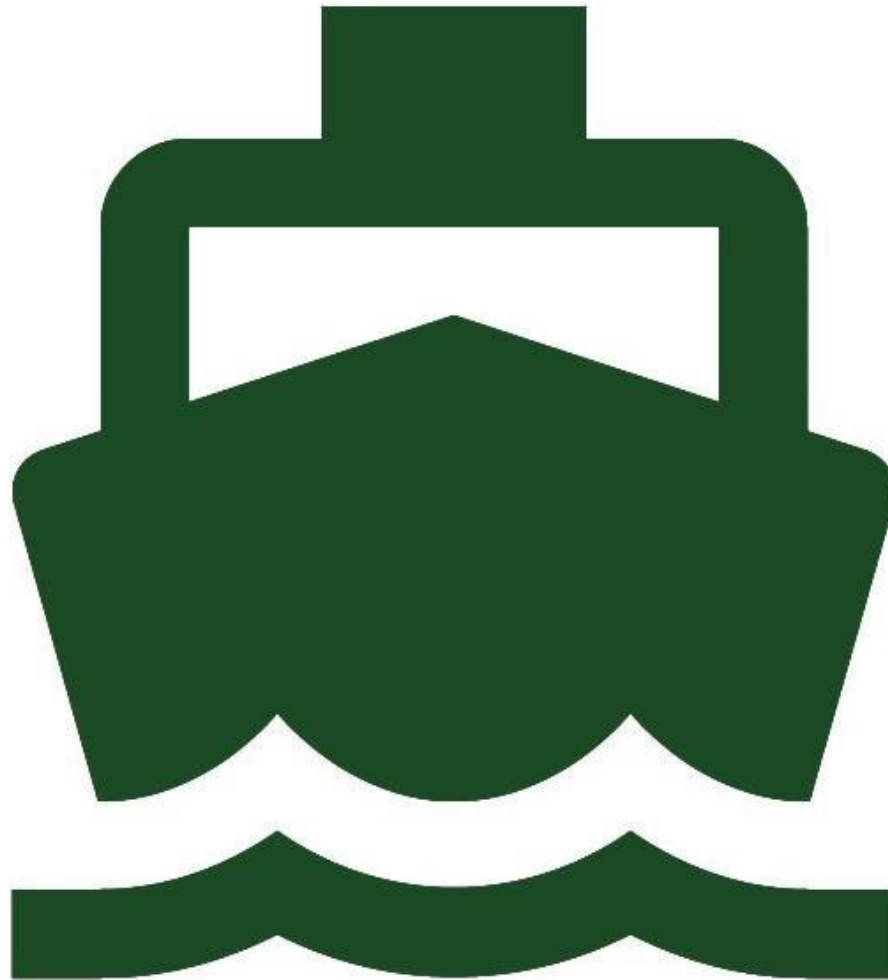
## BUMBER



RUBBER

EXPANDED RUBBER

CO-MOULDED



RUBBER

EXPANDED RUBBER

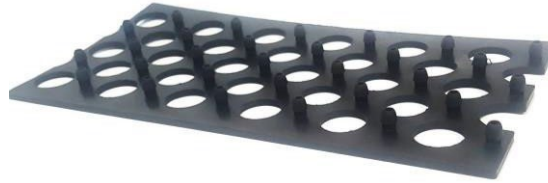
CO-MOULDED



**DISTANCE ITEM**



**PAD WITH ANCORAGE PINS**



**GASKET**



**GAS MASKS**



**BRIDGE SUPPORTS**



**NAUTICAL ITEMS**



**RUBBER**

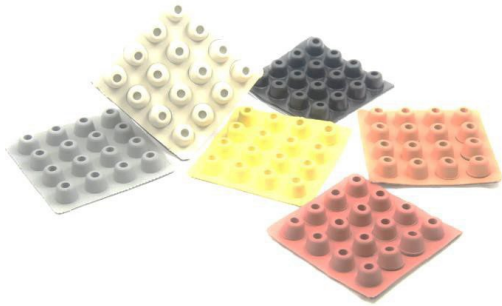
EXPANDED RUBBER

CO-MOULDED





## BUFFERS WITH ADHESIVE LAYER



## FINS



## RUBBER FABRIC



## SPORT FLAT CONES



## MOTORCYCLE FILTER BOX SLEEVE



## RUBBER MATS FOR PADEL COURT



RUBBER

EXPANDED RUBBER

CO-MOULDED



## EXPANDED NEOPRENE & EPDM MATS



## EXPANDED RUBBER MATS FOR PADEL COURTS



RUBBER

**EXPANDED RUBBER**

CO-MOULDED



## ENGINE SUPPORT



## SIRENS FOR ALARMS



## COMPONENTS



## ANTI-SEISMIC BEARING



## METAL TO RUBBER COMPONENTS



## HOUSEHOLD-ELECTRIC ITEMS



RUBBER

EXPANDED RUBBER

CO-MOULDED

# SOGO – Contact List – [www.sogo.it](http://www.sogo.it)

CONTACTS	TELEPHONE	NAME, SURNAME	E.MAIL
----------	-----------	---------------	--------

## Plant, R&D, Technical Office, Logistic and Customer Quality

Plant & Technical Director	+39.0775.8888.100 +39.348.45.17.517	Lorenzo Agosti	 <a href="mailto:lorenzo.agosti@sogo.it">lorenzo.agosti@sogo.it</a>
Project Engineer	+39 0775.8888.107 +39.348.40.25.885	Paolo Zambelli Tunder	 <a href="mailto:paolo.zambelli@sogo.it">paolo.zambelli@sogo.it</a>
Product Development + Project Manager	+39 0775.8888.107	Antonella Fratarcangeli	 <a href="mailto:antonella.fratarcangeli@sogo.it">antonella.fratarcangeli@sogo.it</a>
Logistic & Production	+39.0775.8888.119 +39.348.70.58.660	Agostino De Marchis	 <a href="mailto:ago.demarchis@sogo.it">ago.demarchis@sogo.it</a>
Customer Quality	+39.0775.8888.100 +39.348.17.10.112	Katia Olivieri	 <a href="mailto:customer.quality@sogo.it">customer.quality@sogo.it</a>

## Sales & Marketing dpt.

Sales & Proposal office	+39.0775.8888.112 +39.392.98.12.910	Roberto Rotondo	 <a href="mailto:roberto.rotondo@sogo.it">roberto.rotondo@sogo.it</a>
Order Entry	+39.0775.8888.104	Sara Antonelli	 <a href="mailto:sara.antonelli@sogo.it">sara.antonelli@sogo.it</a>
Sales & Mktg Dpt.	+39.0775.8888.112	Simona Spaziani	 <a href="mailto:simona.spaziani@sogo.it">simona.spaziani@sogo.it</a> <a href="mailto:sogo.sales@legalmail.it">sogo.sales@legalmail.it</a>

CONTACTS

THÉLÉPHONE

E.MAIL



## FRANCE: Bureau Commercial et Marketing

Nicolas Domange

+33 (0) 6 07 50 00 85

[nicolas.domange@sogo.it](mailto:nicolas.domange@sogo.it)

KONTAKT

TELEFON

E.MAIL



## DEUTSCHLAND: Business Development Manager

Fabio Hentschel

+49 (0) 228 96 28 490

[f.hentschel@italia-marketing.de](mailto:f.hentschel@italia-marketing.de)



**VIDEO AZIENDALE SOGO SpA – italiano:** <https://www.youtube.com/watch?v=JVxbDt4pEmw>

**SOGO SpA CORPORATE VIDEO – english:** <https://www.youtube.com/watch?v=TuYy3V4c27U>

**VIDÉO DE L'ENTREPRISE SOGO SpA – français:** <https://www.youtube.com/watch?v=bkZdtl3fFhw>

**VIDEO DES UNTERNEHMENS SOGO SpA – deutsche:** <https://www.youtube.com/watch?v=wdWtQawj7nE>

